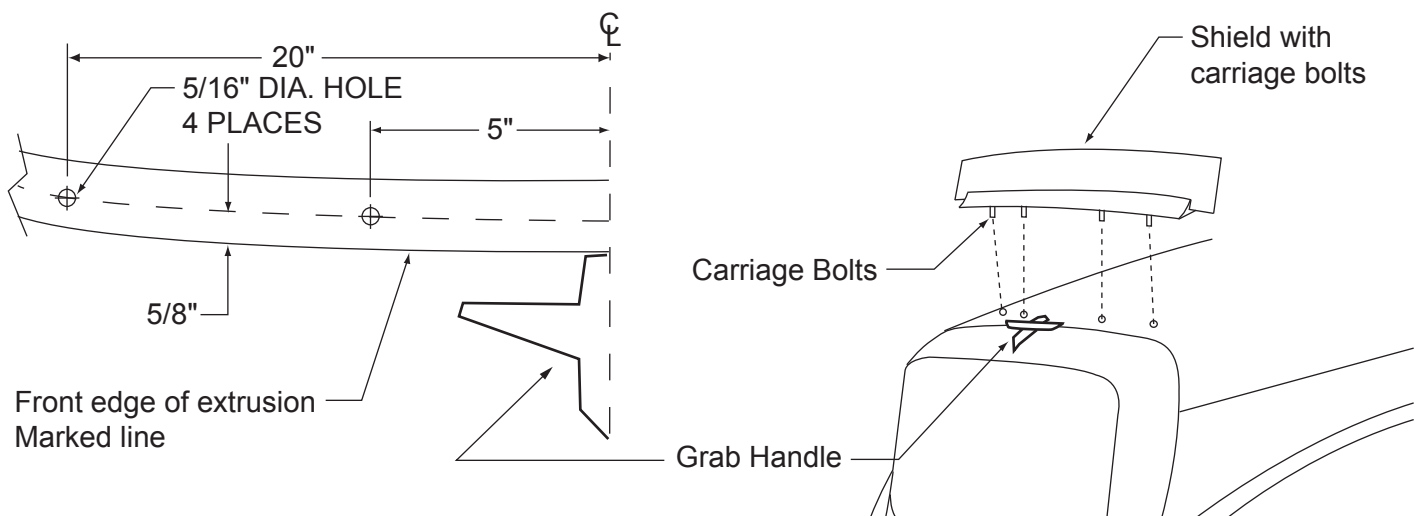


**Tools required:**

Masking tape, Drill with 5/16" bit, Marker, Adjustable wrench, Tape measure

1. Cover the top portion of hood behind grab handle with masking tape for temporary protection.
2. Center shield on truck hood behind grab handle. See Illustration for proper placement.
3. With shield properly placed on truck hood, hold securely and mark a line along the front edge of the aluminum extrusion. Also make a mark at each end of the aluminum extrusion. Remove shield.
4. On the marked line measure out 5 inches from the center of the truck hood and place a mark. On the marked line measure out 20 inches from the center of the truck hood and place a another mark. Repeat procedure for opposite side See illustration.
5. At each of the four marks, measure back 5/8", see illustration. Drill 5/16" diameter holes at these marks. Remove masking tape.  
**NOTE:** When drilling holes through hood, make sure area below is clear.
6. Slide the carriage bolts into the slotted extrusion so that the carriage bolts align with the holes,
7. Center shield and fasten in place using the flat washers, and lock nuts.  
**NOTE:** INSPECT UNDER HOOD FOR CLEARANCE..



**Cleaning:** Do not use solvents of any kind. Never wipe shield when dry. Use plenty of soap and water. Use a clear non-cleaning wax to remove light scratches in shield.