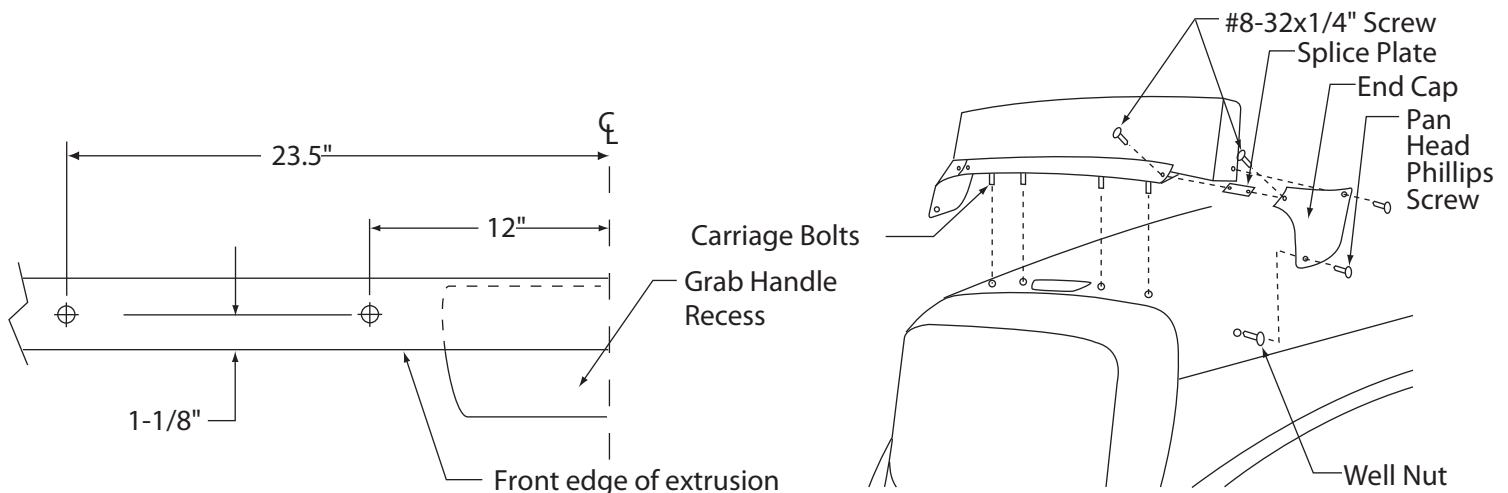


For Aeroshield 76069***

Freightliner M2 106" BBC

***Color codes; 001=Clear, 002=Smoke

1. Attach end cap to Aeroshield by sliding splice plate into aluminum extrusion. Secure with a #8-32x1/4" machine screw. Place end cap over splice plate and attach with a #8-32x1/4" machine screw, as shown in illustration. Repeat procedure for other side.
2. Cover the top portion of hood behind grab handle with masking tape for temporary protection.
3. Place shield so that the front edge of the extrusion crosses near the center of the grab handle recess, and is parallel with the back edge of the grille cap. Slide the shield forward or backward until the end caps wrap flush to the hood.
4. Holding shield in place with extrusion flat against hood, draw a line onto the masking tape along front edge of extrusion as shown in illustration.
5. To locate the mounting holes, measure from the center of the hood 12" and 23.5" toward the outer edges of the hood as shown in the illustration. At each distance, measure back 1-1/8" from the line drawn on the masking tape, and mark mount hole location
6. Drill 5/16" diameter holes at marked. Remove masking tape.
NOTE: When drilling holes through hood, make sure area below is clear.
7. Slide the carriage bolts into the slotted extrusion so that the carriage bolts align with the holes, Fasten shield in place using the flat washers, lock washers, and hex nuts as shown in the illustration.
INSPECT UNDER HOOD FOR CLEARANCE.
8. Press endcap against hood firmly. Mark hole location and remove endcap. Drill a 1/2" diameter hole at each location. Insert rubber well nut into each hole and reattach endcaps to extrusion. Fasten end cap to well nut using the pan head phillips screw as shown in the illustration. Repeat procedure for other side.
9. Align plastic wing of shield with endcap. Using the existing hole in endcap as a template, drill a 3/16" diameter hole through the plastic wing and fasten with small screw and nut as shown in illustration. Repeat procedure for other side.



Cleaning: Do not use solvents of any kind. Never wipe shield when dry. Use plenty of soap and water. Use a clear non-cleaning wax to remove light scratches in shield.