

CONTENTS

- (2) Venta-lators
- (2) alcohol pads
- (1) Scotch Brite scuff pad
- (1) instruction sheet

Important

Read all instructions carefully before beginning installation. The ideal installation temperature is between 65°-110°F (18°- 43°C). The Venta-lators mount on the **INSIDE** of the window channel.

..... **Helpful Hint**

A trial fit is recommended to ensure proper positioning, since installing and then removing the Venta-lators will degrade the adhesive performance of the tape.

Preparation

STEP 1

Roll down the window. Scuff the inside of the window channel with the Scotch Brite scuff pad. Then clean inside channel with an alcohol pad. See **FIGURE 1**

STEP 2

To reduce the risk of tape contamination due to improper positioning, expose only 2" (5cm) of tape from each end of the deflector flange.

Installation

STEP 3

Slide the front end flange into position inside window channel. Then rotate deflector up and slide the lateral and rear end flanges into proper position. Press the exposed areas of tape against the inside rubber surface and verify position. See **FIGURE 2**

STEP 4

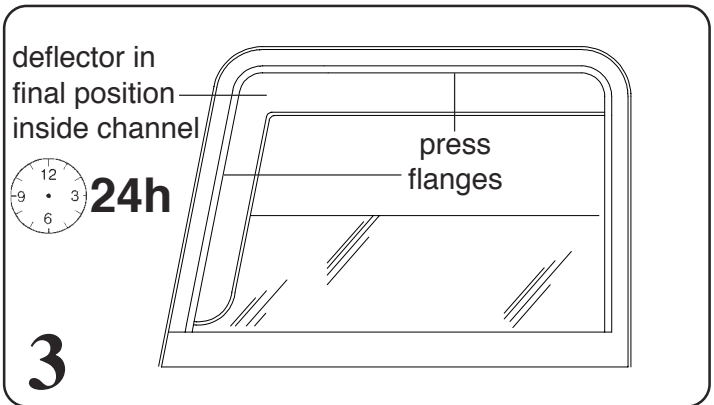
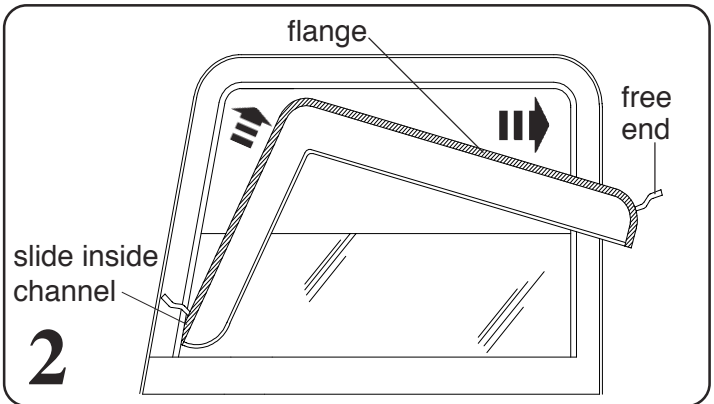
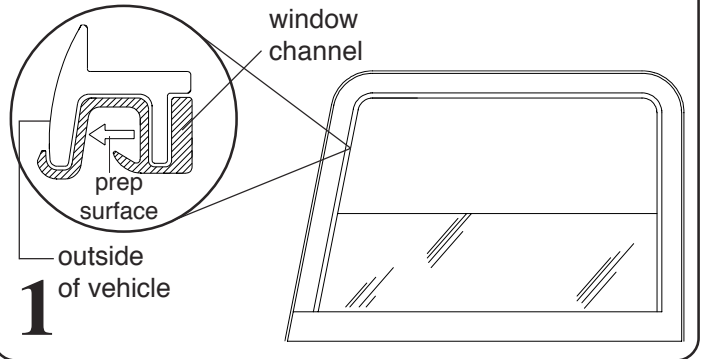
With the deflector in its final position, remove the remainder of the tape liner by pulling on the free ends. Run you finger along the inside of the window channel to ensure proper adhesion of the taped flange to the rubber surface. See **FIGURE 3**

STEP 5

Raise the window to its closed position and leave shut for approximately 24 hours to properly cure adhesive.

Repeat **STEPS 1-5** for opposite side deflector.

NOTE: Actual application may vary slightly from drawings.



**Venta-lators available for:
Mack, Peterbilt, Kenworth, Freightliner,
International, Volvo and other manufacturers.**