

CONTENTS

- (2) Venta-lators
- (2) alcohol pads
- (1) instruction sheet

IMPORTANT: Read all instructions carefully before beginning the installation. A trial fit is recommended. The ideal installation temperature is between 65°-110°F (18°-43°C). The top of the visor mounts on the **inside** of the window channel. The side of the visor mounts on the vertical vent post.

STEP 1: Clean the inside channel and vertical vent post with an alcohol pad. See **FIGURE 1**

STEP 2: To reduce the risk of tape contamination due to improper positioning, expose only 2" (5cm) of tape from each end of the deflector flange. See **FIGURE 2**

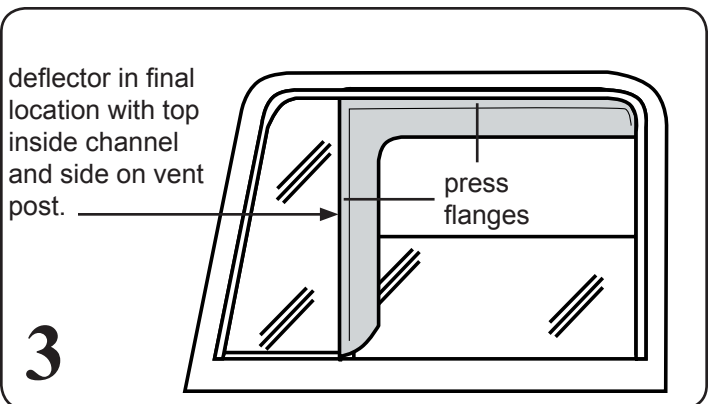
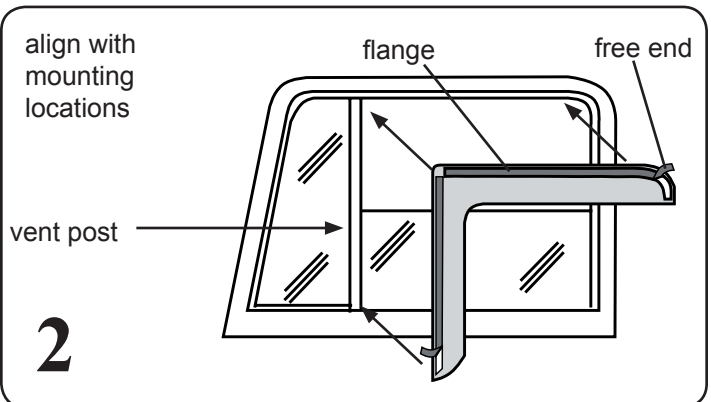
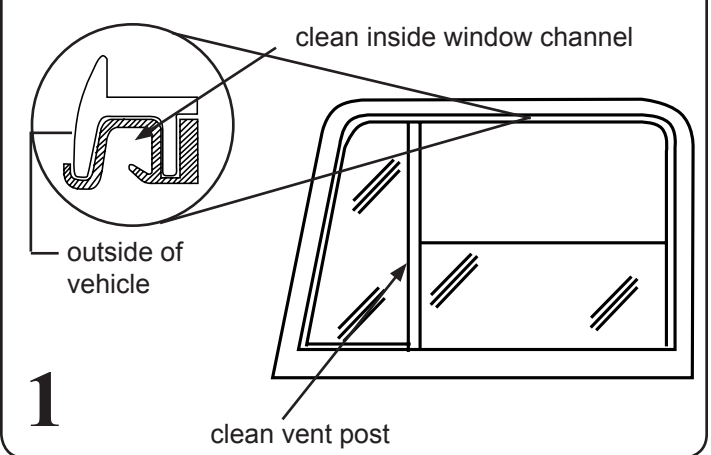
STEP 3: Align the driver side deflector with the previously prepared vent post. Then rotate the deflector up and slide the lateral and rear flanges into proper position. Press the exposed areas of tape against the trim and verify position.

STEP 4: With the deflector in its final position, remove the remainder of the tape liner by pulling on the free ends. Run your finger along the inside of the window channel and along the flange on the vent post to ensure proper adhesion of the taped flange to the rubber surface. See **FIGURE 3**

STEP 5: Raise window to closed position and leave shut for approx. 24 hours to properly cure adhesive.

Repeat **STEPS 1-6** for opposite side deflector.

NOTE: Actual application may vary slightly from drawings.



**Venta-lators available for:
Mack, Peterbilt, Kenworth, Freightliner,
International, Volvo and other manufacturers.**